

# StruxureWare Data Center Operation: Lab

StruxureWare Data Center Operation: Lab is a separate application you can use to simulate changes to data center models without affecting the model of the actual live environment in the StruxureWare Data Center Operation application.

The StruxureWare Data Center Operation: Lab client application is available from the Data Center Operation server's download page. You need a valid StruxureWare Data Center Operation: Capacity license to log on to the application.

You can use the StruxureWare Data Center Operation: Lab to simulate different scenarios, for example, whether the design is strong enough to cover your future requirements. If you continue to add equipment at the current pace, would the power supply suffice, or would you need additional power supplies or cooling units; would you continue to have the necessary redundancy, etc.

You can simulate future scenarios in the existing model of the live environment from StruxureWare Data Center Operation, or you can delete it to start a new lab model from scratch. Subsequently, when you launch the application, and at least one lab model has previously been saved, a dialog box will appear asking you to select the model that you want to open.

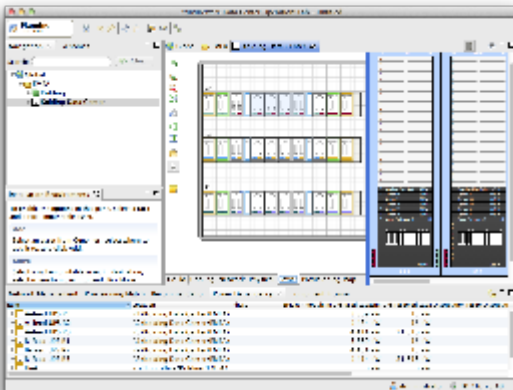
You will be working in a separate environment, similar to the one you know from StruxureWare Data Center Operation. However, as this is a separate test environment only, you will not have all features available that you know from StruxureWare Data Center Operation:

- No StruxureWare Data Center Operation: Change features
- No view of device and alarm data
- No measured data from devices (Capacity calculations are purely based on computed data, i.e. on the load you input into model, not measured values collected from the devices.)
- No reports

Your changes to lab models do not affect the model of the actual live environment in the StruxureWare Data Center Operation application. However, any changes to available products in the genome library will subsequently be available in StruxureWare Data Center Operation application.

To simulate changes to a product that you want to continue to use in its original version in StruxureWare Data Center Operation, make a copy and use it as a template for a new product in the StruxureWare Data Center Operation: Lab.

You can delete any obsolete lab models in File > Manage Models.



123 Steps to...	See also
<p><b>Installing StruxureWare Data Center Operation: Lab</b></p> <p>The StruxureWare Data Center Operation: Lab client application is available from the Data Center Operation server's download page.</p> <ol style="list-style-type: none"><li>1. Open a Web browser and type the address of your Data Center Operation server: <a href="https://yourservername">https://yourservername</a> .</li><li>2. On the Data Center Operation server's download page, click LAB Download and follow the instructions to download the StruxureWare Data Center Operation: Lab client. You can now proceed to logging on to the application with the same credentials as for StruxureWare Data Center Operation.</li></ol>	<p><a href="#">Designing simulations in StruxureWare Data Center Operation: Lab</a></p>