

Configuring External System Integration

In **System Setup > External Systems Configuration**, you can set up integration with an external system. Select the type of server, e.g. StruxureWare Data Center Expert or VMware vCenter server, and enter the server communication data.

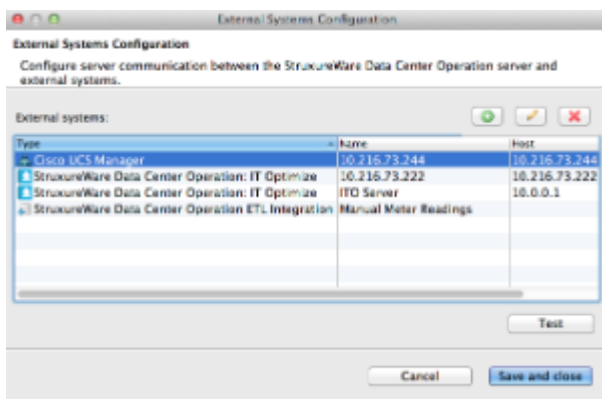
Once the communication between the servers has been established, the Data Center Operation server retrieves alarms and measured data from the external monitoring system or migration data from the virtualization system. When you have configured the physical location of these real-world devices, the system can guide you and show any active and potential problem areas in your data center.

Alarms and migration data is collected in real time and allows you to monitor and react instantly on critical data.

You must ensure [time synchronization](#) has been configured for the servers.

Supported product versions:

- VMware vSphere 5.5
- vCenter 5.0
- Cisco UCS 2.2
- BMC Remedy 8.1
- SCOM 2012 R2
- DataCenter Expert 7.2.4.7
- ITO 7.4.0.0.106



See also

[Configuring StruxureWare Data Center Expert Integration](#)

[Configuring VMware vCenter Integration](#)

[Configuring Remedy Integration](#)

[Configuring Cisco UCS Manager Integration](#)

[External System Integration Through ETL](#)

[Viewing External System Data](#)

[The Importance of System Time Synchronization for Accurate Power Values](#)